

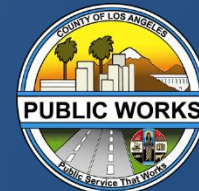


PUBLIC WORKS
LOS ANGELES COUNTY

FRANKLIN D. ROOSEVELT PARK REGIONAL STORMWATER CAPTURE PROJECT



Mark A Lombos, P.E.
February 14, 2018





CHALLENGES



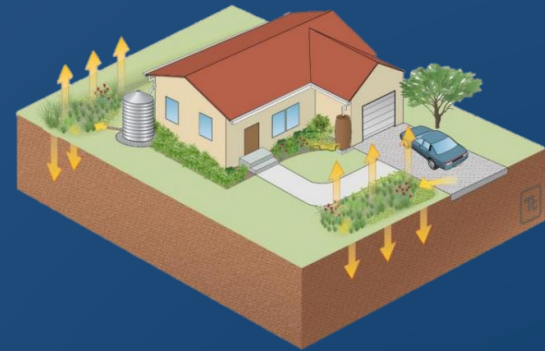


COUNTY'S STRATEGIES

1. Non-Structural BMPs



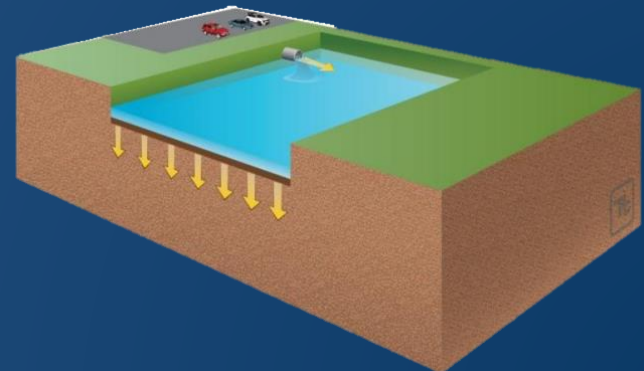
2. Low Impact Development



3. Green Streets



4. Regional Projects





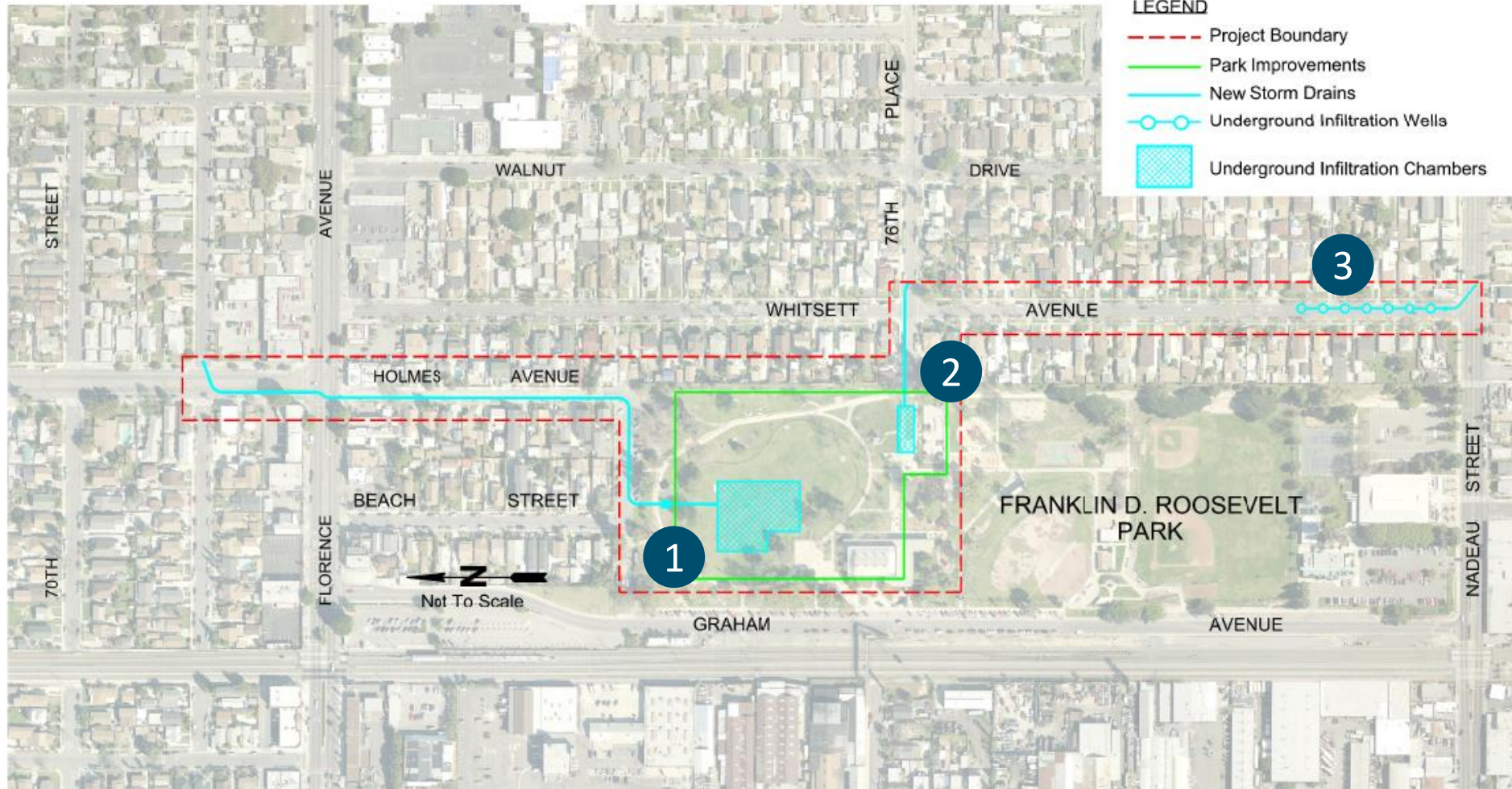
REGIONAL PROJECTS (AKA MULTI-BENEFIT PROJECTS)



- Water Quality
- Water Conservation
- Flood Protection
- Recreation



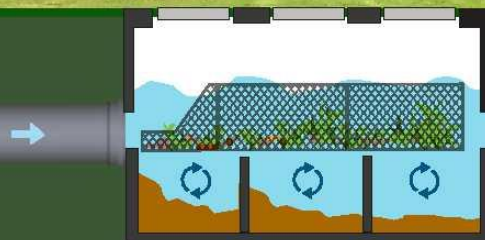
FRANKLIN D. ROOSEVELT PARK REGIONAL STORMWATER CAPTURE PROJECT



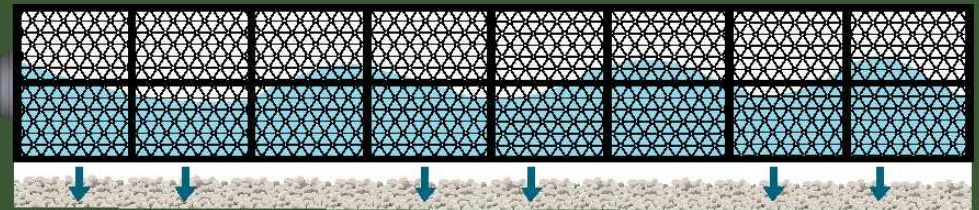


PROFILE VIEW OF SOCCER FIELD

Franklin D. Roosevelt Park Regional Stormwater Capture Project



Pretreatment



Infiltration chambers

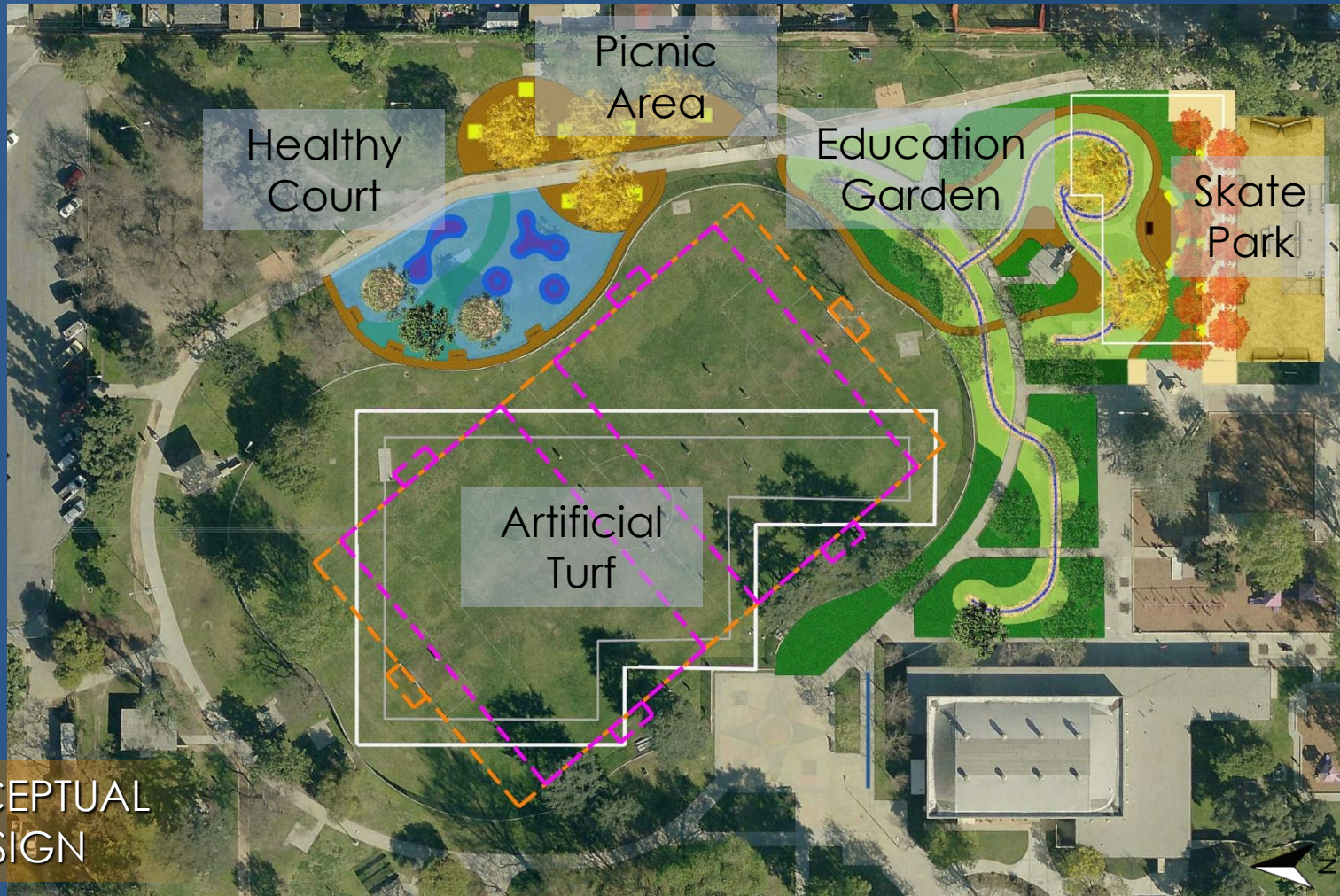


PROFILE VIEW OF WHITSETT AVENUE





OVERVIEW OF PROPOSED PARK IMPROVEMENTS



CONCEPTUAL
DESIGN



EDUCATION GARDEN



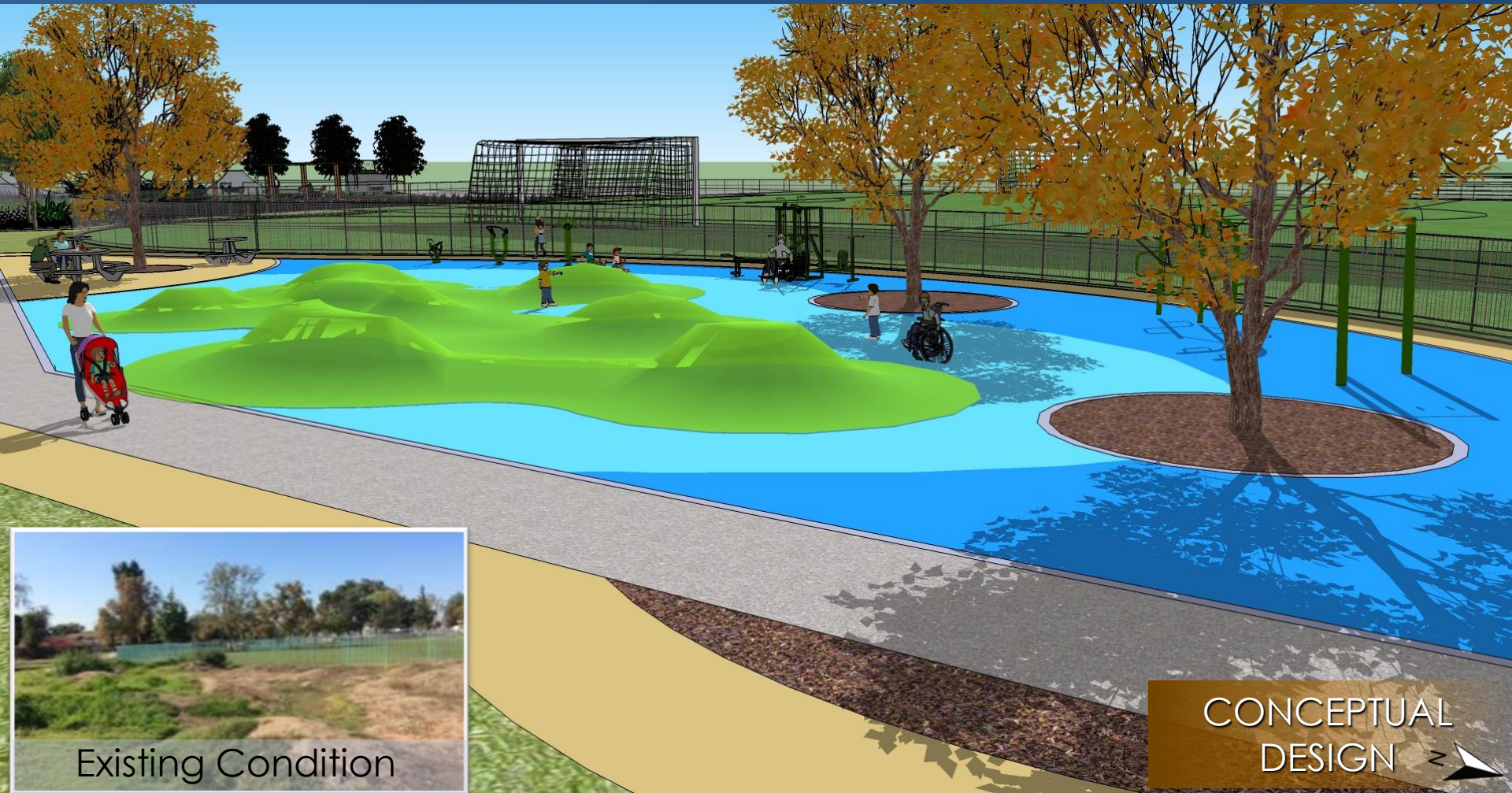
CONCEPTUAL
DESIGN



Existing Condition



HEALTHY COURT

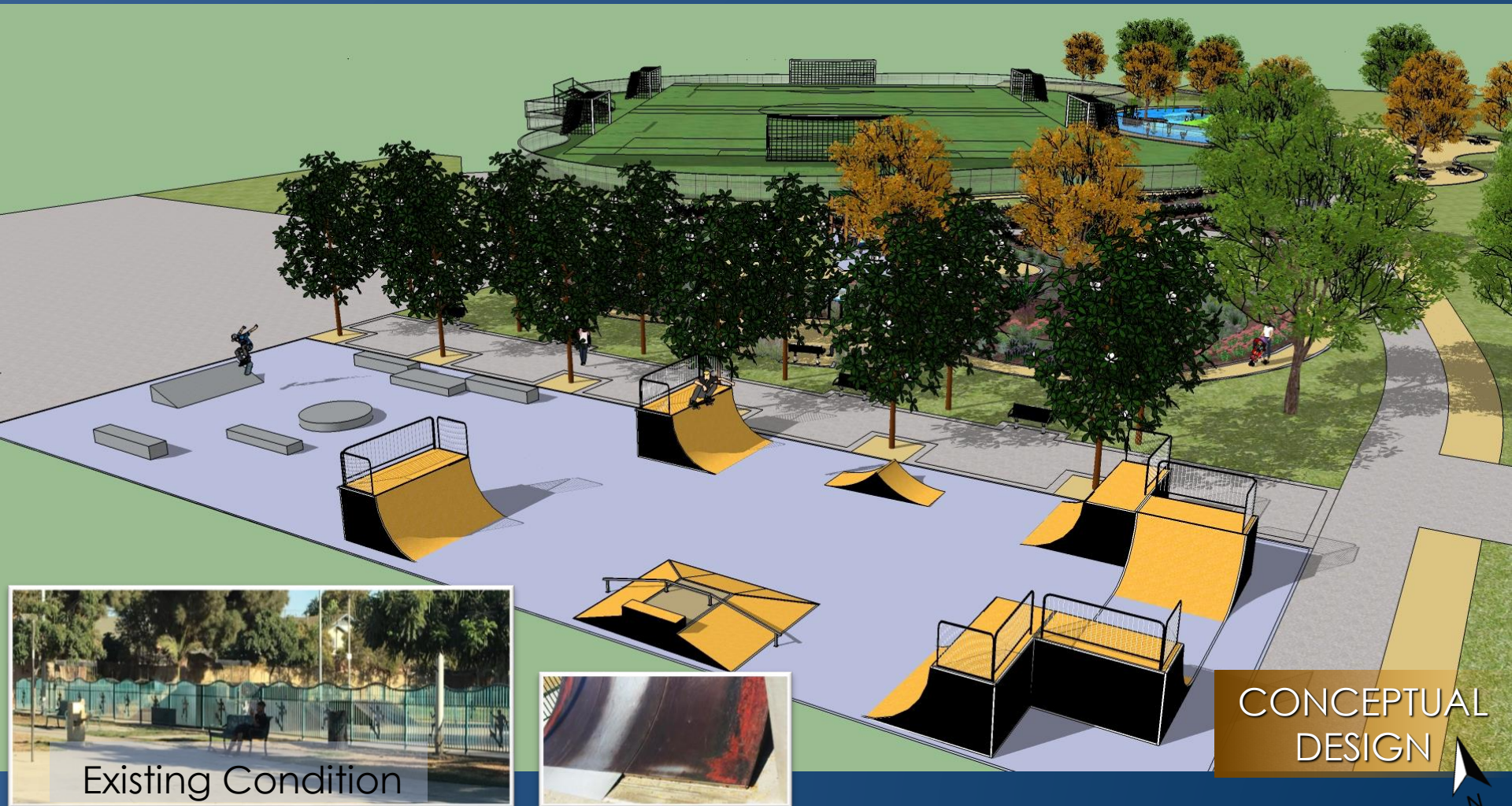


Existing Condition

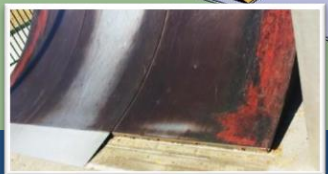
CONCEPTUAL
DESIGN 



SKATE PARK RENOVATION



Existing Condition



CONCEPTUAL
DESIGN



PROJECT SCHEDULE

Start Construction

Storm Drains
Infiltration Chambers
Dry wells
Park Improvements
Plant Establishment

Spring
2018

Summer
2018

Summer
2019

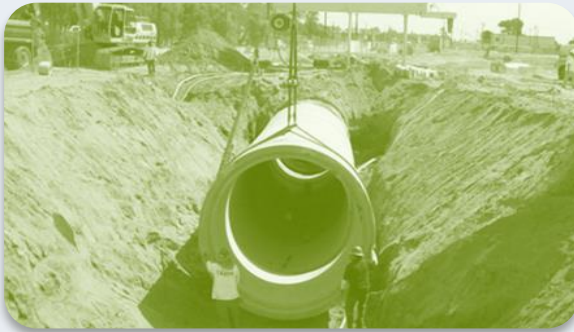
Advertise and Award

Final CEQA Documents
Final Design

Complete Construction

Operation and Maintenance
Post-Project Monitoring

TEMPORARY CONSTRUCTION IMPACTS



Residents

- Traffic
- Noise
- Air Quality



Park Users

- Soccer programs
- Skate park
- Reduced parking
- Alternate access



PUBLIC WORKS
LOS ANGELES COUNTY

www.FDRparkproject.com



PROJECT PARTNERS:



Los Angeles County Supervisor Mark Ridley-Thomas
County of Los Angeles Department of Parks and Recreation
California Department of Water Resources - Proposition 84 2015 Implementation Grant Program
Los Angeles County Flood Control District